

TROJAN ROUND

LED Bulkhead

FernHoward
Lighting



A cost-effective range of robust, IP65 rated LED Bulkheads. The rigidly constructed base and screwed-down diffuser protect the Trojan against abuse.

IP65

IK10

LED

Lighting
CONTROL
Options

up to
139
lm/w

50,000
Hours
L70

>80
CRI (Ra)

4000K
Colour
Temperature

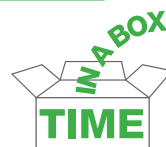
Extended
5 YEAR
Warranty
Register with us

FEATURES

- Energy efficient LED gear tray
- IP65 – formed-in-place foam gasket protects against dust and water
- Flush fit to fixing surface ensures vandal resistance
- Robust Polycarbonate body in black or white
- Clear or opal polycarbonate diffuser
- Retained diffuser screws
- Security screws available

SIMPLE TO INSTALL AND USE

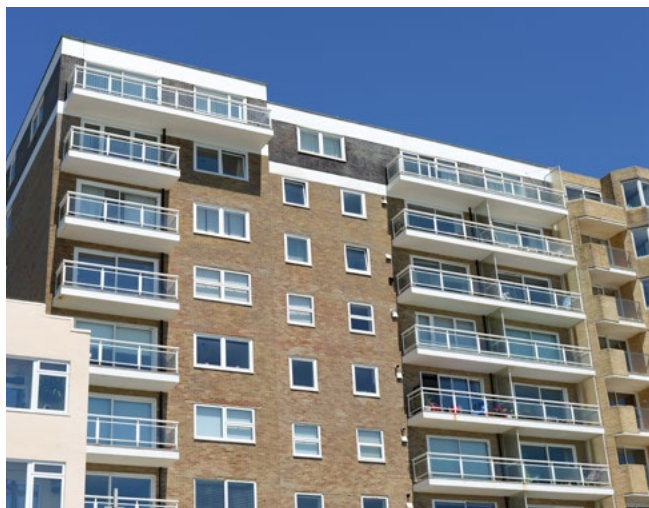
- Hinged LED gear tray and Time-in-a-Box packaging for swift and easy installation
- BESA box fixing points for easy cable entry
- Wall or ceiling mountable
- Exterior or interior use



TYPICAL APPLICATIONS

Ideal for internal and external applications, where durability and longevity are required, such as

- Youth centres
- Housing associations and social housing
- Sports areas
- Public walkways
- Car parks

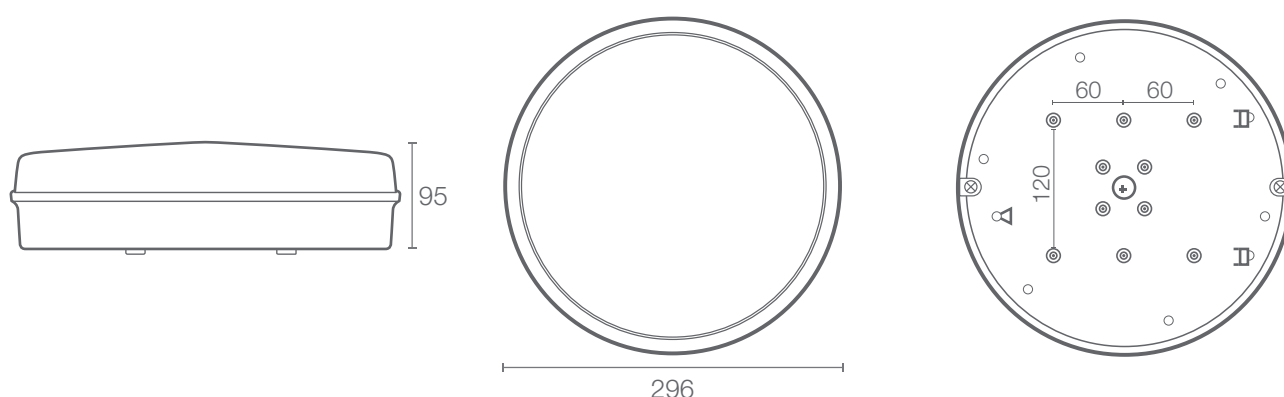


For more Information call +44 (0)1420 470 400 email lighting@fernhoward.com or visit www.fernhoward.com

TROJAN ROUND



TECHNICAL INFORMATION



Dimensions:

Ø 296 x 95mm

Weight:

1.2kg

Mounting type:



Wall



Ceiling



Interior



Exterior

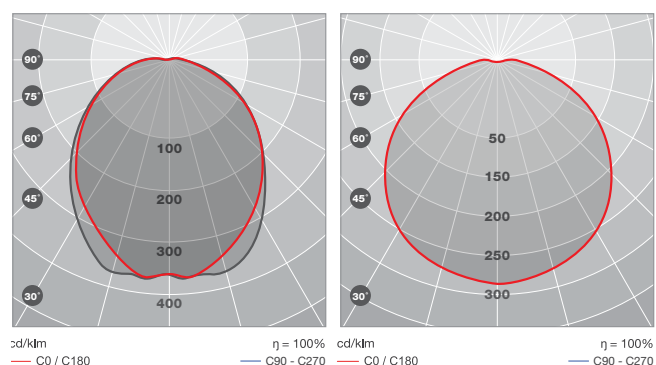
Base Colour Options:

- ☐ White base
RAL 9003
- ☒ Black base
RAL 9005 50% gloss

Diffuser Options:

- ☒ Clear Diffuser
- ☐ Opal Diffuser

LIGHT DISTRIBUTION

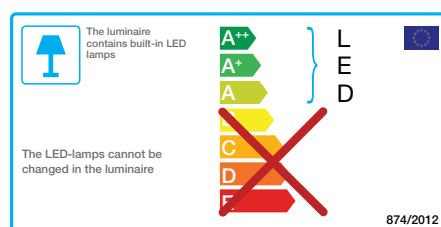


Clear Diffuser

Opal Diffuser

Photometric files at www.fernhoward.com

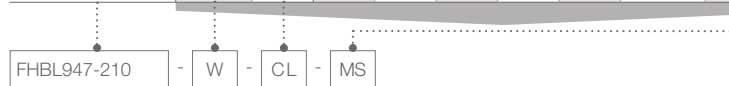
STANDARDS



TROJAN ROUND

ORDERING GUIDE

Standard Product Code			Light Management Options Suffix*								Performance Data		
	Base Colour	Diffuser Option	DALI	Dimming	Corridor Function	3hr Emergency	Self-Test	DALI Emergency	Microwave Sensor	Photocell	Lumen Output lm	Wattage W	Efficacy lm/W
Trojan Round Galaxy LED													
FHBL947-090	B/W	CL	DA	DIM	-	EM	AT	DAEM	MS	PH	1300	10	130
	B/W	OP	DA	DIM	-	EM	AT	DAEM	MS	PH	950	10	95
FHBL947-160	B/W	CL	DA	DIM	CF	EM	AT	DAEM	MS	PH	1800	13	139
	B/W	OP	DA	DIM	CF	EM	AT	DAEM	MS	PH	1300	13	100
FHBL947-210	B/W	CL	DA	DIM	CF	EM	AT	DAEM	MS	PH	2500	19	132
	B/W	OP	DA	DIM	CF	EM	AT	DAEM	MS	PH	1900	19	100



Example Code: Trojan Round 20W, White, Clear with Microwave Sensor

*Most combinations are possible except the following:

- DA & DIM - Dimming and DALI cannot be combined
- AT & EM - AT represents Self-Test Emergency configuration
- DA = DALI on Mains Driver only, DAEM = DALI on Emergency Driver only
DA and DAEM can be combined

Lumen Output in EM:

Clear diffuser - 220lm

Opal diffuser - 150lm

50,000
Hours
L70

>80
CRI (Ra)

4000K
Colour
Temperature



Luminaires are manufactured and tested in accordance with BS EN60598.
Incorporated control gear and components comply with BS/VDE standards.
Luminaires are tested in accordance with IES LM-79-08.